



BAHARI HOMES

Residency

CONTACT US

0796 888 111 | 0796 999 111

[baharihomes1@gmail.com](mailto:baharihomes1@gmail.com)

<https://baharihomes.co.ke>

# AN ARCHITECTURAL

# Harvest

AT THE HEART OF BAHARI HOMES, LIES A HIDDEN GEM,  
THE LUXURY COURTYARD.

Situated at the intersection of Kilimani and Kirichwa road next to Quckmart Kilimani, Bahari homes is Spanning across a spacious 1.1-acre land, comprising of 170 units, with 68 two-bedroom units and 102 three-bedroom units. Each floor offers 2 units and is serviced by 2 high-speed lifts, resulting in a total of 10 high-speed lifts for residents' convenience.

An attractive feature of Bahari Homes Residency is the inclusion of a beautiful 1000 square-meter garden in the center, providing a refreshing green space for residents to enjoy.



## KEY FEATURES

- Spanning across a spacious 1.1-acre land
- 2 Units per floor serviced by 2 highspeed lifts
- All units get sunrise and sunset
- A beautiful 1000 square-meter garden



INVEST IN THE FUTURE

*Lifestyle*



# KEY DISTANCES

---

## SHOPPING CENTRES

- Quickmart Kilimani 1 min
- Greenhouse mall 3 mins
- Adams Arcade 3 mins
- Adlife plaza 4 mins
- Yaya centre 5 mins
- Prestige plaza 5mins
- Quickmart Lavington 5 mins
- carrefour market 5 mins

## EDUCATION CENTRES

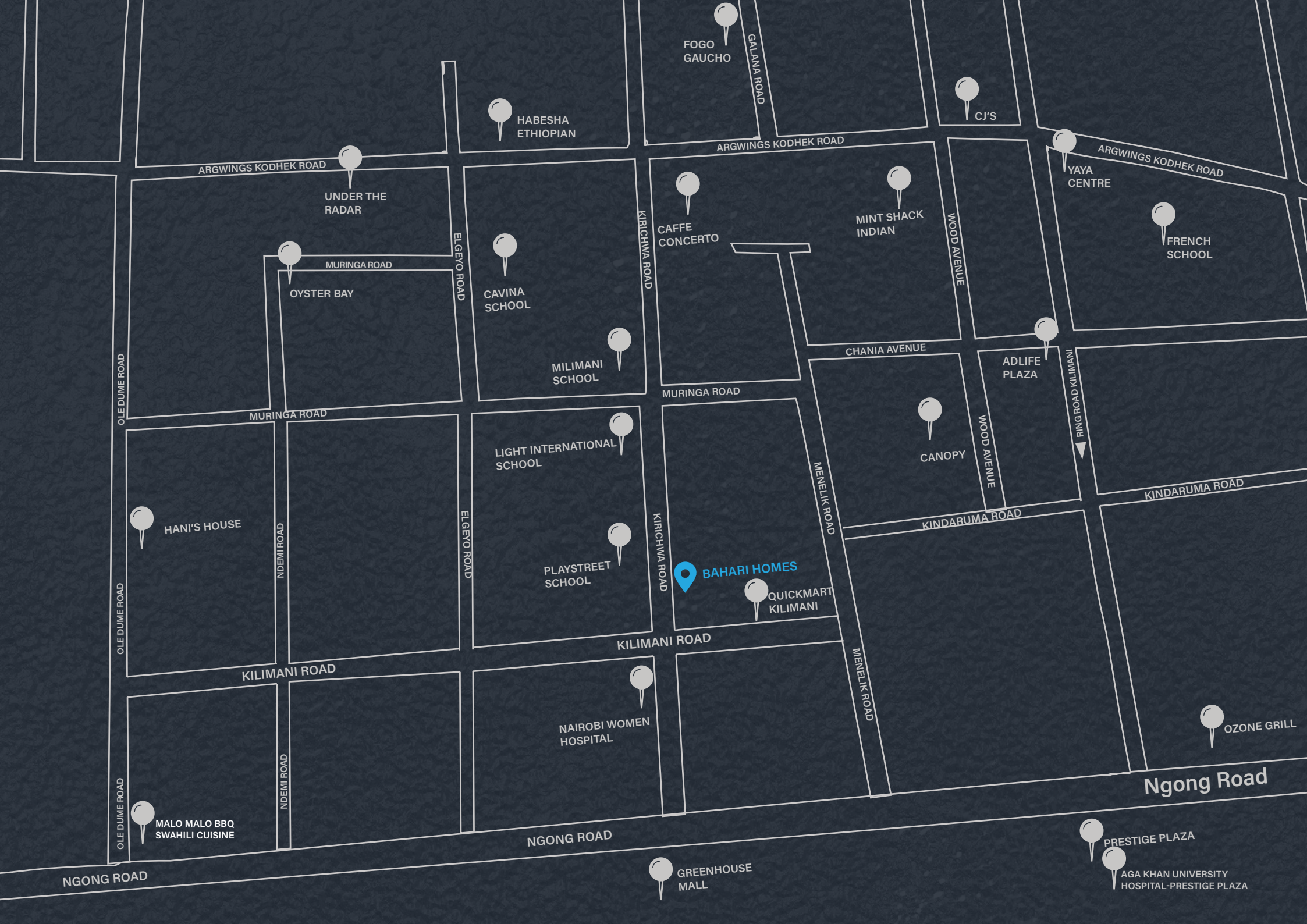
- Play street school 1 min
- Milimani Primary School 1 mins
- Little scholar Academy 2 mins
- Cavina school 3 mins
- Kilimani primary School 3 mins
- Vineyard School 4 mins
- French school 5 mins
- Light International school 7 mins
- La Fontana International school 4 mins

## MEDICAL FACILITIES

- Nairobi Women 1 mins
- Menelik Medical Centre 2 mins
- Agha Khan Prestige 6 min
- Coptic Hospital 6 mins
- 761 International Hospital 6 mins
- Caremark hospital 7 mins
- Nairobi Hospital 7 mins
- Kenyatta Hospital 12 mins

## RESTAURANTS

- Katanazi restaurant and bar 1 mins
- Menelik place 1 mins
- Mode caffe 1 mins
- Shark food 2 mins
- Caffe concerto 2 mins
- Symphony restaurant 2 mins
- The Fish bowl 3 min
- Dinner Gardens 3 mins
- Sheger Ethiopian restaurant 4 mins



FOGO GAUCHO

HABESHA ETHIOPIAN

CJ'S

ARGWINGS KODHEK ROAD

ARGWINGS KODHEK ROAD

ARGWINGS KODHEK ROAD

UNDER THE RADAR

CAFFE CONCERTO

MINT SHACK INDIAN

YAYA CENTRE

FRENCH SCHOOL

MURINGA ROAD

CAVINA SCHOOL

MILIMANI SCHOOL

CHANIA AVENUE

ADLIFE PLAZA

OLE DUMIE ROAD

OYSTER BAY

ELGEYO ROAD

KIRICHWA ROAD

WOOD AVENUE

MURINGA ROAD

LIGHT INTERNATIONAL SCHOOL

MURINGA ROAD

CANOPY

WOOD AVENUE

RING ROAD KILIMANI

KINDARUMA ROAD

HANI'S HOUSE

PLAYSTREET SCHOOL

BAHARI HOMES

QUICKMART KILIMANI

MENELIK ROAD

KINDARUMA ROAD

OLE DUMIE ROAD

NDEMI ROAD

ELGEYO ROAD

KIRICHWA ROAD

KILIMANI ROAD

NAIROBI WOMEN HOSPITAL

MENELIK ROAD

KILIMANI ROAD

Ngong Road

OZONE GRILL

OLE DUMIE ROAD

MALO MALO BBQ SWAHILI CUISINE

NDEMI ROAD

NGONG ROAD

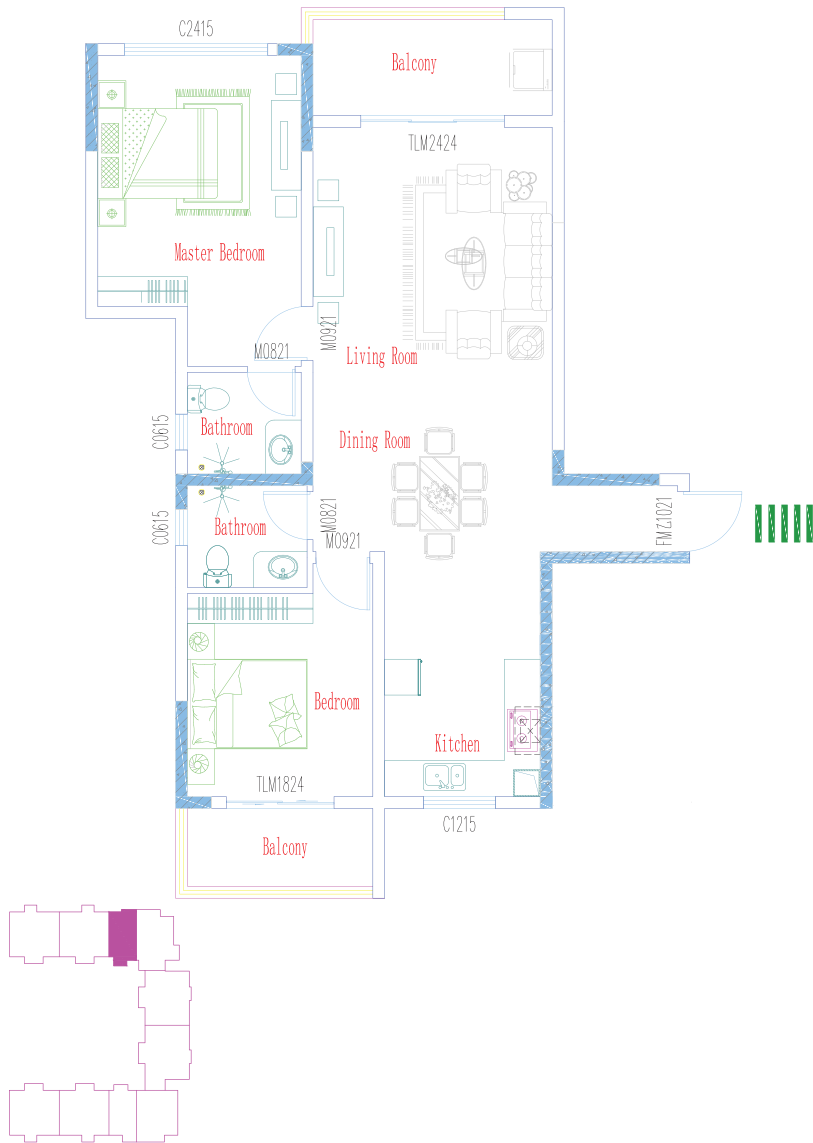
GREENHOUSE MALL

PRESTIGE PLAZA

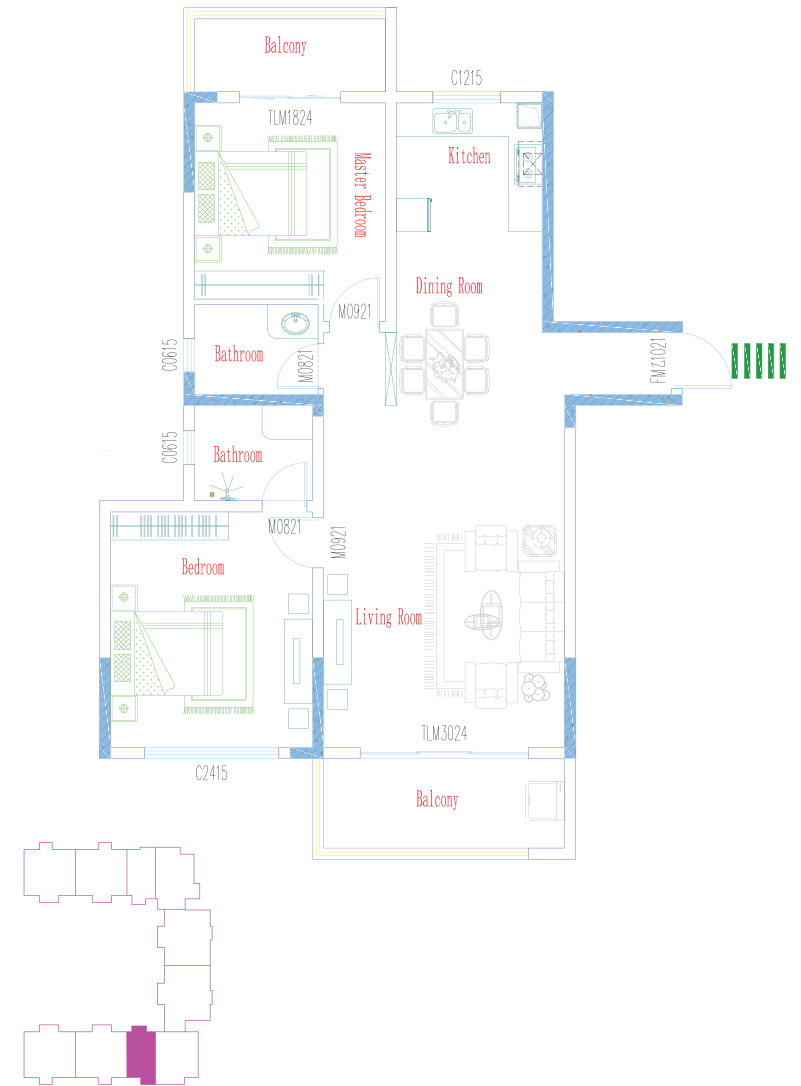
AGA KHAN UNIVERSITY HOSPITAL-PRESTIGE PLAZA

NGONG ROAD

# TWO BEDROOM TYPE A



Two Bedroom Unit | Unit Size 117 m<sup>2</sup>



Two Bedroom Unit | Unit Size 123 m<sup>2</sup>



# ALL INCLUSIVE LUXURY

Cozy, charming, and modern, the two bedrooms units are a pleasure to come home, offering categories of various features and have an abundance of natural light as well as refreshing breeze.

## FEATURES

- Comes with two spacious balconies
- Designed to experience both sunrise and sunset
- Large windows to maximize flow of natural light
- Ample storage and closet space
- Expansive fitted semi closed kitchen and dining



2 Bedrooms



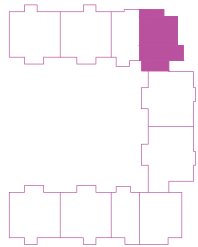
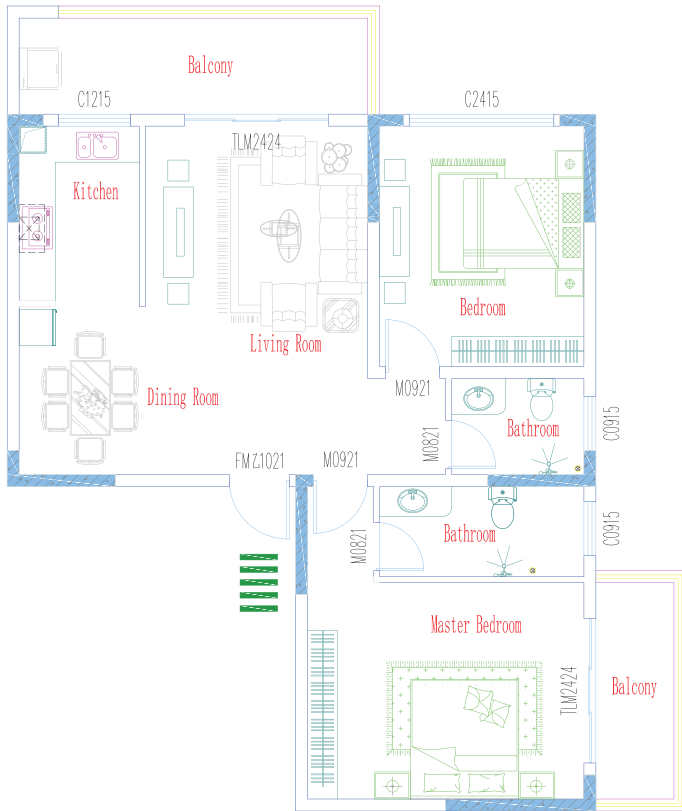
master en suite



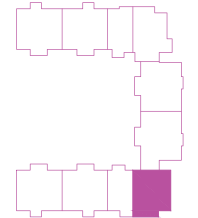
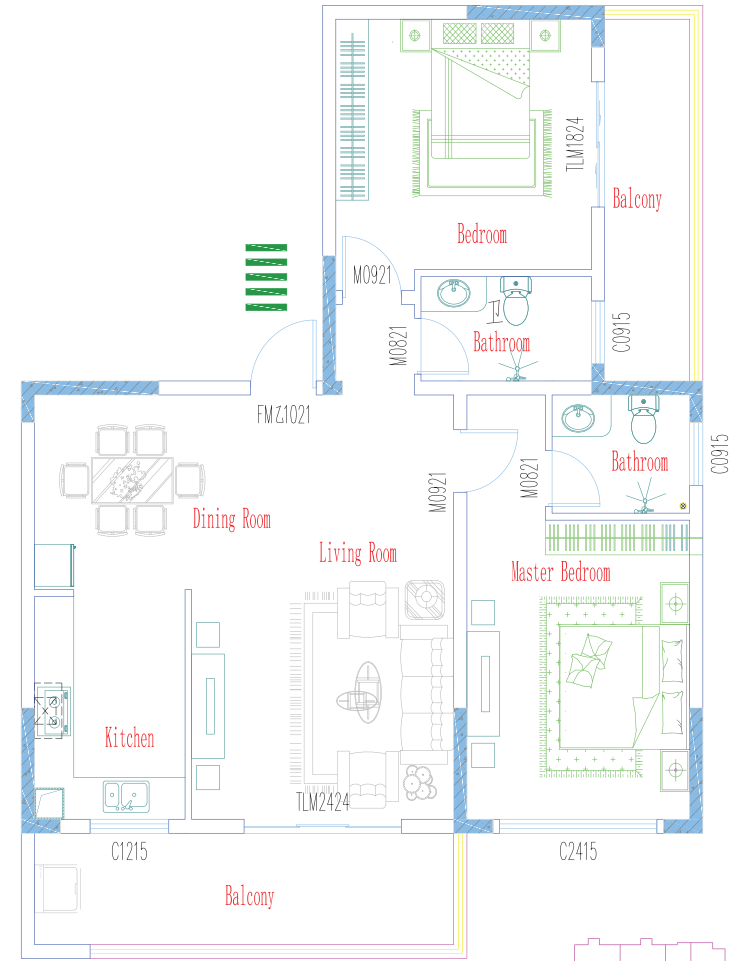
1 Parking space



# TWO BEDROOM TYPE B



**Two Bedroom Unit | Unit Size 122 m<sup>2</sup>**



**Two Bedroom Unit | Unit Size 129 m<sup>2</sup>**



# WHERE PERFECTION RESIDES

Your luxury apartment awaits. Pamper yourself with high quality finishings. Get on with the business of enjoying your life and leave the little details behind.

## FEATURES

- Comes with 2 spacious balconies
- Designed to experience both sunrise and sunset
- Large windows to maximize flow of natural light
- Ample storage and closet space
- Expansive fitted semi closed kitchen and dining



2 Bedrooms

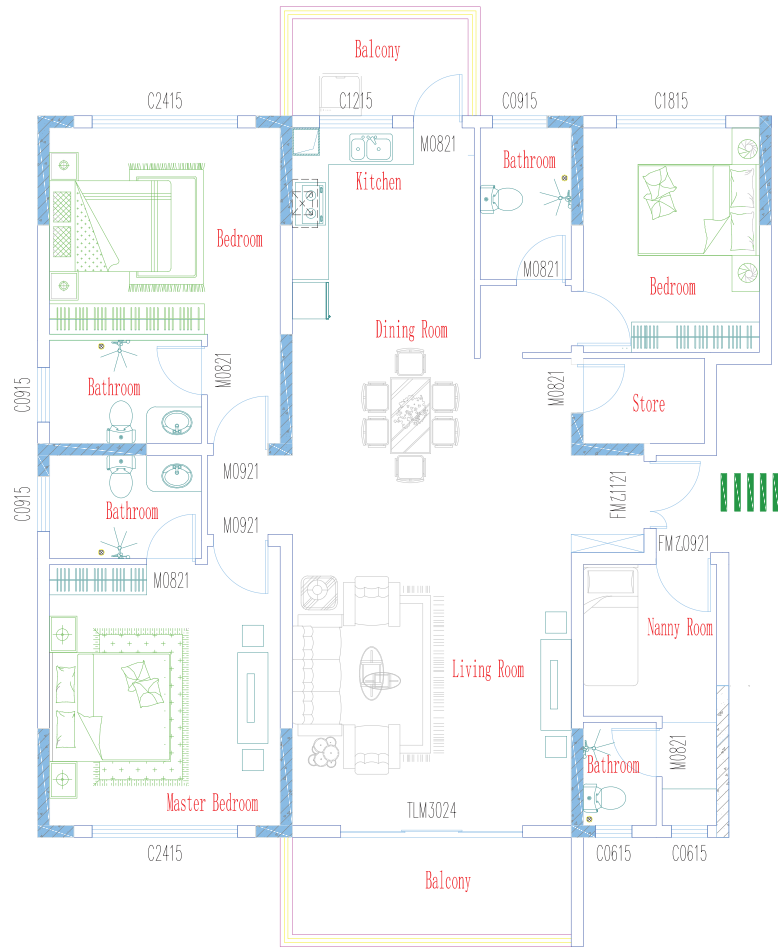


Master en suite

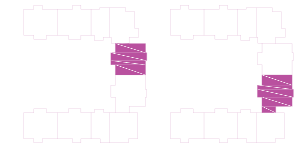
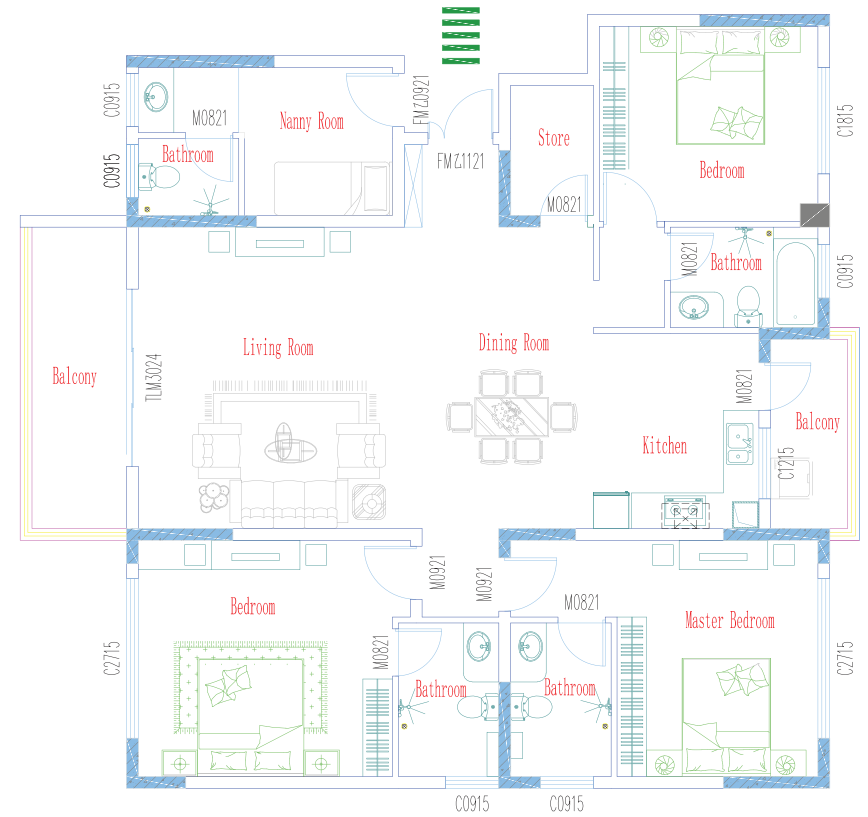


1 Parking space





**Three Bedroom Unit | Unit Size 173 m<sup>2</sup>**



**Three Bedroom Unit | Unit Size 182 m<sup>2</sup>**



# RIVETING DESIGN DETAILS

Our efficiently designed 3BRs create a comfortable, spacious life for you and your family. All in the midst of breathtaking natural beauty. With ample balconies for you to enjoy the heights that you have achieved in life.

## FEATURES

- Comes with 2 spacious balconies
- Comes with a DSQ and a pantry
- Designed to experience both sunrise and sunset
- Large windows to maximize flow of natural light
- Entranced into a dining area and semi closed kitchen concept, and lounge
- Two bedrooms with ample closet space and large windows



3 Bedrooms



3 Bathrooms



2 Parking space







WELCOME

POAC



Your housing cluster isn't just where you live. It's where you relax, rejuvenate, and integrate with your community. Hence Bahari Homes Residency has been endowed with recreational amenities for you to unwind, social spaces for you to interact with people and enjoy the conveniences of quality living.





BAHARI HOMES

Residency