



Eternity Heights

Premium duplex apartments
and penthouses in Kitisuru

Project Overview

Boutique Residential Development with Just 20 Units

18 x 2-Bedroom Duplex Apartments

(112.56 sqm / 1,211 sq. ft)

1 x 2-Bedroom Penthouse

(127.44 sqm / 1,371 sq. ft)

1 x 3-Bedroom Penthouse

(187.87 sqm / 2,022.81 sq. ft)

Modern, efficient layouts with
premium finishes

Ideal for professionals, families
and investors



18 Duplex Apartments
2 Pent Houses

Prime Location

Strategically Situated in Kitisuru –
One of Nairobi's Most Coveted
Addresses

Location

Peaceful suburban living with easy urban
access

Redhill Link Road 5 min

United Nations HQ in Gigiri 15 min

Central Business District 25 min

Jomo Kenyatta International
Airport 30 min

Area Benefits



Kitisuru: upscale green suburb in Nairobi



Surrounded by lush greenery, quiet and serene



High sales and rental demand from professionals, families and diplomats



Residents can conveniently reach key destinations enhancing their daily lives



Close proximity to top international schools, shopping centres and hospitals



Peaceful Retreat from Nairobi's hustle and bustle

Your Home's Features

Smart Design Meets
Everyday Luxury



Floor to ceiling
windows for natural
light



Approx. 2.9m ceiling
height



Luxury tiles floors and
premium sanitaryware



Ensuite bedrooms



Walk in master closet



Guest cloakroom



Fibre connectivity



Ample power points

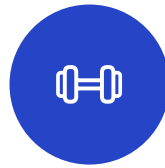


Approx. 9 Meter Space
Between Both Blocks
for privacy, light and
airflow

Unmatched Amenities



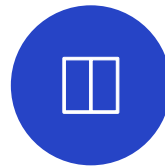
Rooftop Garden
with scenic views



Gym



Dedicated Co-working space
with meeting room



High Speed Lift



24/7 CCTV surveillance



Grand Entrance Lobby



Borehole Water Supply



Backup Generator

Construction Quality

Built with Superior Materials and
Workmanship

Premium steel and best in
class cement

Superior piping and concrete
finishes

Exceptional interior detailing

Built for durability, aesthetics
and comfort

Construction Timeline

We are currently ahead of our projected timeframes



20 Jan 2025

Groundbeaking



11 Jun 2025

Super Structure Completed



Currently

Plaster Work and Skimming



Mar 2026

Estimated Completion

Strategic Investment Opportunity

Attractive Returns in a High-Demand Market

ON SALE NOW

2 Bed Duplexes (112.56 sqm / 1,211 sq. ft)	from KES 12.5 M
2 Bed Penthouse (127.44 sqm / 1371.55 sq. ft)	KES 15,85 M
3 Bed Penthouse (187.87 sqm / 2,022.81 sq. ft)	KES 23.50M

Projected rental yield is ~8.2%

High capital potential in Kitisuru

Limited inventory. Only 20 units.

Payment Plan

Flexible Friendly Payment Terms



20% deposit

60% equal quarterly instalments

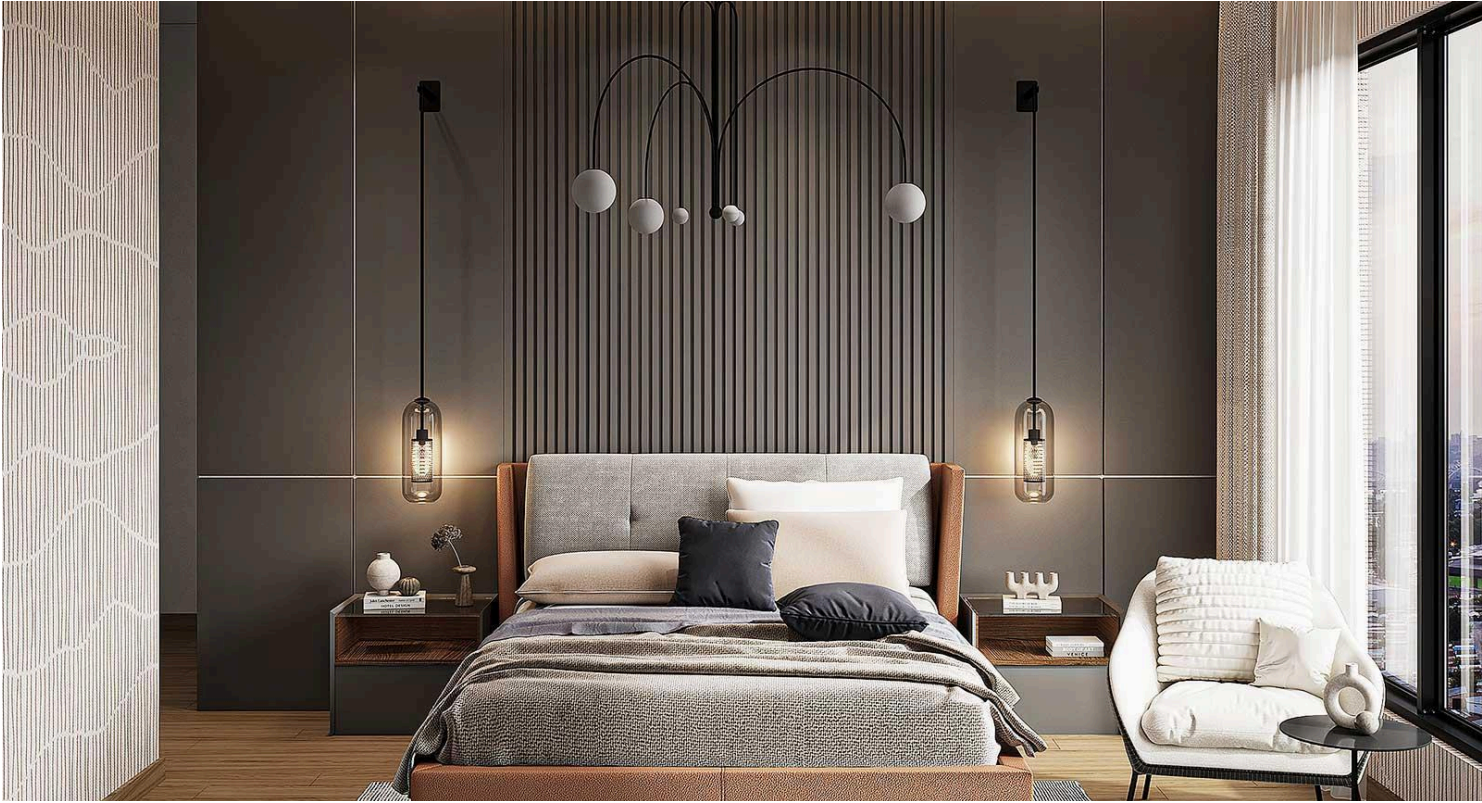
20% on completion

Full payments also accepted

Living room



Master bedroom



Bedroom 2



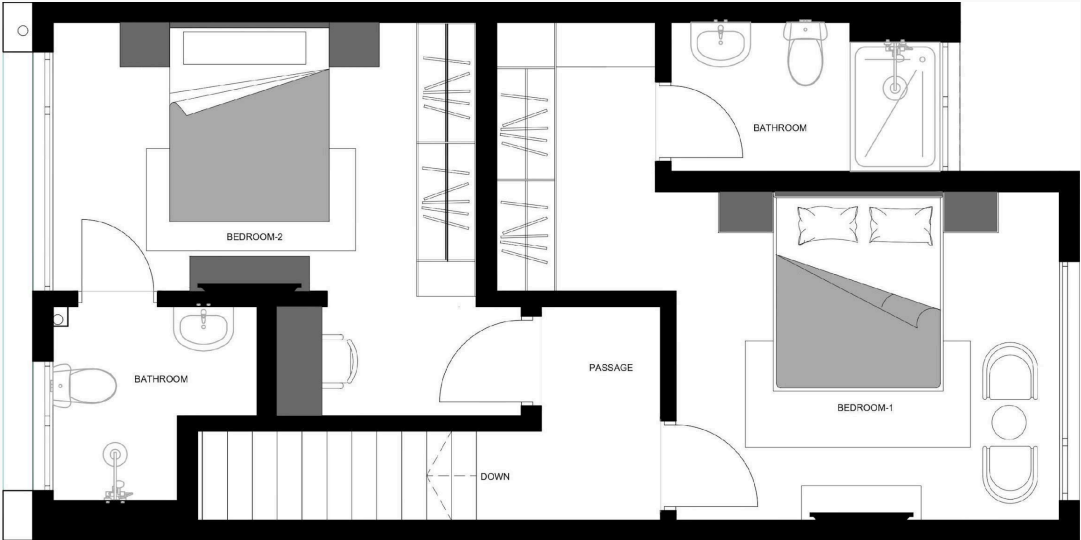
Kitchen



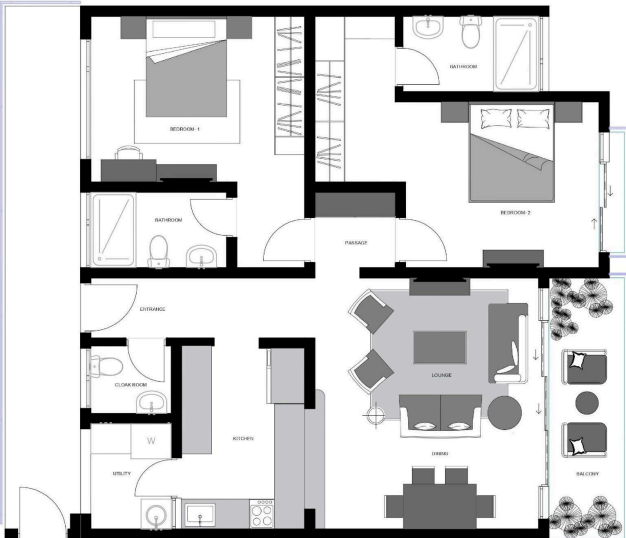
2 Bedroom duplex lower level floor plans



2 Bedroom duplex upper level floor plans



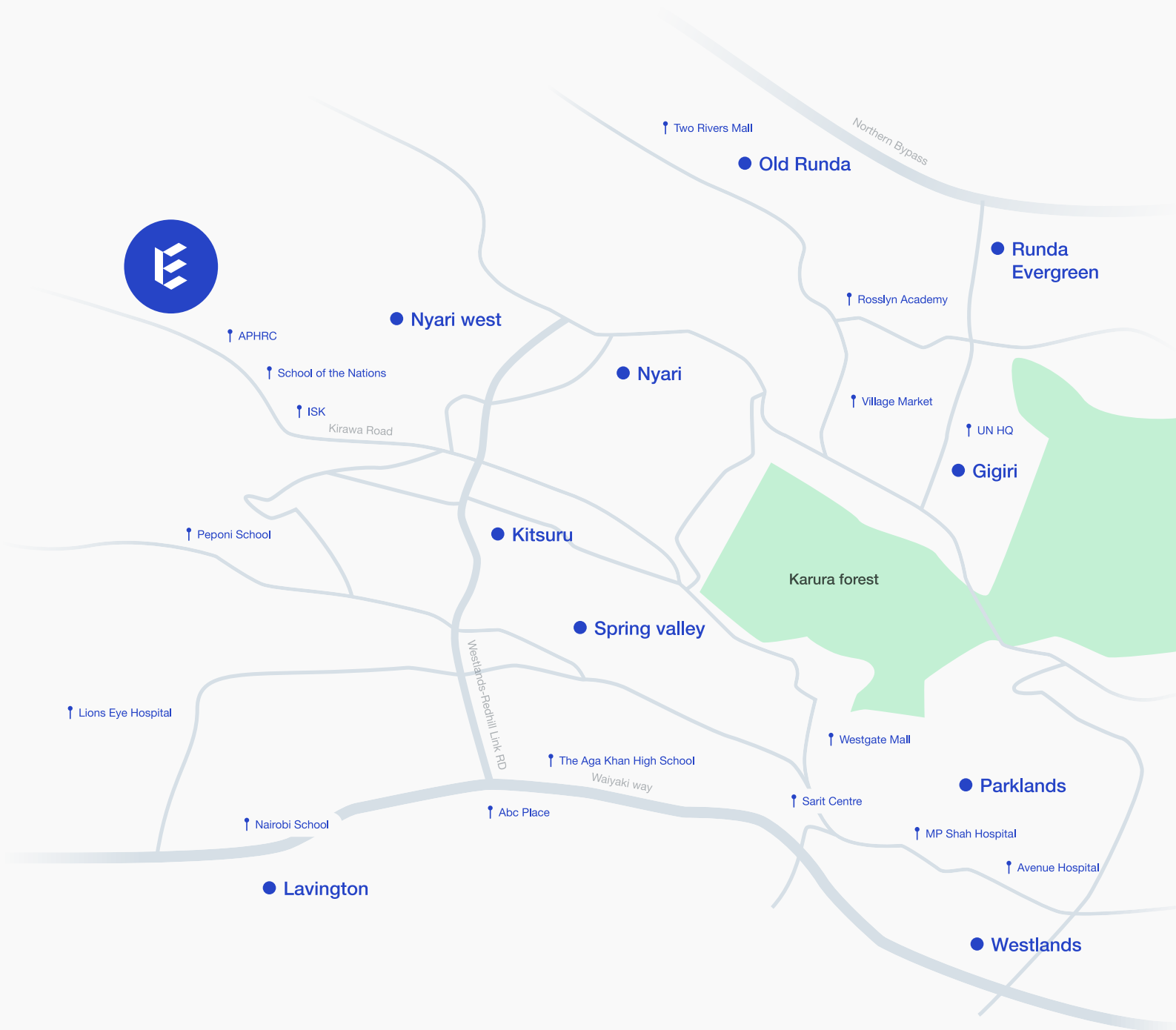
2 Bedroom pent house floor plans



3 Bedroom pent house floor plans



Location





Secure Your Unit Today

OFFICE ADDRESS

2129 Office Suite,
Muthithi Rd,
Nairobi, Kenya

WEBSITE

eternityproperty.co.ke

EMAIL

sales@ogre.co.ke
homes@eternityproperty.co.ke

TELEPHONE

+254 722 999356
+254 782 000648

FOLLOW US ON SOCIAL NETWORKS



Disclaimer

This presentation is for informational and illustrative purposes only and does not constitute a legal offer, contract, or commitment of any kind. All architectural renders, floor plans, layouts, finishes, and visuals are artistic impressions intended to convey the general concept and vision of the development, and may be subject to change during construction process.

Pricing, unit availability, specifications, timelines, and investment returns are indicative and may be revised without prior notice. Prospective purchasers and investors are advised to conduct their own independent due diligence and seek professional advice before making any financial or purchasing decisions.

Eternity Property Limited and its affiliates accept no liability for any loss or damage arising from reliance on the information contained in this presentation.